

ADMITTED BY LEVEL REPORT

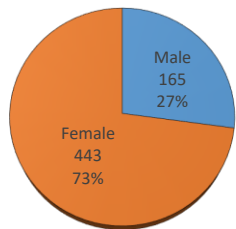
Summer 2020

Gender, Residency, Age & Full/Part Time Totals

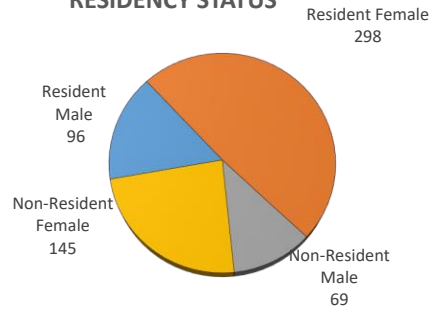
University of Oklahoma Health Sciences Center

LEVEL/COLLEGE	TOT	GENDER			RESIDENCY STATUS						AGE DISTRIBUTION						ENROLLMENT STATUS					
		Male	Female	%F	RESIDENT			NON-RESIDENT			0-20	21-25	26-30	31-40	41-50	>50+ Unkn	FULL TIME			PART TIME		
					Male	Female	%	Male	Female	%							Male	Female	%F	Male	Female	%F
UNDERGRADUATE	159	26	133	84%	21	111	83%	5	22	17%	20	78	32	19	8	2	19	93	70%	7	40	30%
Allied Health	49	7	42	86%	6	37	88%	1	5	12%	18	24	4	2	1	0	6	36	86%	1	6	14%
Dentistry	0	0	0	-	0	0	-	0	0	-	0	0	0	0	0	0	0	0	-	0	0	-
Nursing	110	19	91	83%	15	74	81%	4	17	19%	2	54	28	17	7	2	13	57	64%	6	34	36%
HEALTH PROFESSIONAL	438	133	305	70%	73	186	59%	60	119	41%	1	341	56	31	9	0	42	125	38%	91	180	62%
Allied Health	214	51	163	76%	27	89	54%	24	74	46%	0	194	13	7	0	0	23	69	43%	28	94	57%
Dentistry	94	56	38	40%	27	19	49%	29	19	51%	1	68	20	5	0	0	0	0	0%	56	38	100%
Medicine -MD	0	0	0	-	0	0	-	0	0	-	0	0	0	0	0	0	0	0	-	0	0	-
Medicine -PA	82	18	64	78%	12	40	63%	6	24	37%	0	64	10	7	1	0	18	56	90%	0	8	10%
Nursing	46	7	39	85%	6	37	93%	1	2	7%	0	13	13	12	8	0	1	0	2%	6	39	98%
Pharmacy	0	0	0	-	0	0	-	0	0	-	0	0	0	0	0	0	0	0	-	0	0	-
Public Health	2	1	1	50%	1	1	100%	0	0	0%	0	2	0	0	0	0	0	0	0%	1	1	100%
GRADUATE COLLEGE (MS, PhD)	11	6	5	45%	2	1	27%	4	4	73%	0	5	3	2	1	0	0	0	0%	6	5	100%
Allied Health	0	0	0	-	0	0	-	0	0	-	0	0	0	0	0	0	0	0	-	0	0	-
Dentistry	7	4	3	43%	1	0	14%	3	3	86%	0	1	3	2	1	0	0	0	0%	4	3	100%
Graduate -CTS	0	0	0	-	0	0	-	0	0	-	0	0	0	0	0	0	0	0	-	0	0	-
Medicine	4	2	2	50%	1	1	50%	1	1	50%	0	4	0	0	0	0	0	0	0%	2	2	100%
Nursing	0	0	0	-	0	0	-	0	0	-	0	0	0	0	0	0	0	0	-	0	0	-
Pharmacy	0	0	0	-	0	0	-	0	0	-	0	0	0	0	0	0	0	0	-	0	0	-
Public Health	0	0	0	-	0	0	-	0	0	-	0	0	0	0	0	0	0	0	-	0	0	-
TOTAL OUHSC	608	165	443	73%	96	298	65%	69	145	35%	21	424	91	52	18	2	61	218	46%	104	225	54%
Allied Health	263	58	205	78%	33	126	60%	25	79	40%	18	218	17	9	1	0	29	105	51%	29	100	49%
Dentistry	101	60	41	41%	28	19	47%	32	22	53%	1	69	23	7	1	0	0	0	0%	60	41	100%
Graduate -CTS	0	0	0	-	0	0	-	0	0	-	0	0	0	0	0	0	0	0	-	0	0	-
Medicine	86	20	66	77%	13	41	63%	7	25	37%	0	68	10	7	1	0	18	56	86%	2	10	14%
Nursing	156	26	130	83%	21	111	85%	5	19	15%	2	67	41	29	15	2	14	57	46%	12	73	54%
Pharmacy	0	0	0	-	0	0	-	0	0	-	0	0	0	0	0	0	0	0	-	0	0	-
Public Health	2	1	1	50%	1	1	100%	0	0	0%	0	2	0	0	0	0	0	0	0%	1	1	100%
Norman Inter-Campus	0	0	0	-	0	0	-	0	0	-	0	0	0	0	0	0	0	0	-	0	0	-
Non-Degree	0	0	0	-	0	0	-	0	0	-	0	0	0	0	0	0	0	0	-	0	0	-

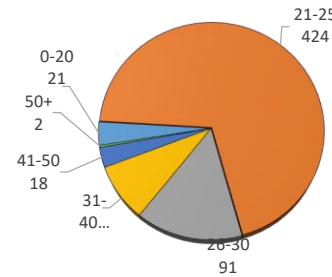
ADMITTED BY GENDER



RESIDENCY STATUS



AGE DISTRIBUTION



ENROLLMENT STATUS

