

ENROLLMENT BY LEVEL REPORT

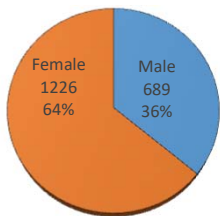
Summer 2018

Gender, Residency, Age & Full/Part Time Totals

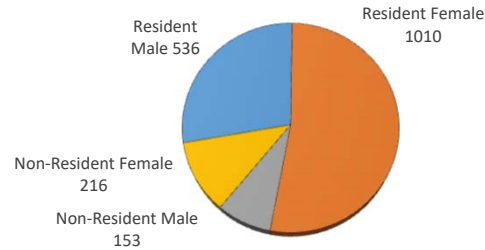
University of Oklahoma Health Sciences Center

LEVEL/COLLEGE	GENDER				RESIDENCY STATUS						AGE DISTRIBUTION					ENROLLMENT STATUS						
	TOT	Male	Female	%F	RESIDENT			NON-RESIDENT			0-20	21-25	26-30	31-40	41-50	>50+ Unkn	FULL TIME			PART TIME		
					Male	Female	%	Male	Female	%							Male	Female	%F	Male	Female	%F
UNDERGRADUATE	266	48	218	82%	44	201	92%	4	17	8%	15	152	47	39	12	1	42	192	88%	6	26	12%
Allied Health	106	19	87	82%	17	81	92%	2	6	8%	15	70	8	9	3	1	13	64	73%	6	23	27%
Dentistry	0	0	0	-	0	0	-	0	0	-	0	0	0	0	0	0	0	0	-	0	0	-
Nursing	160	29	131	82%	27	120	92%	2	11	8%	0	82	39	30	9	0	29	128	98%	0	3	2%
HEALTH PROFESSIONAL	1418	533	885	62%	450	738	84%	83	147	16%	2	762	358	138	42	13	384	580	68%	149	305	32%
Allied Health	390	86	304	78%	77	242	82%	9	62	18%	2	297	61	19	7	4	59	186	63%	27	118	37%
Dentistry	232	129	103	44%	99	80	77%	30	23	23%	0	126	86	18	2	0	37	24	26%	92	79	74%
Medicine -MD	327	186	141	43%	175	127	92%	11	14	8%	0	196	112	18	1	0	186	141	100%	0	0	0%
Medicine -PA	218	59	159	73%	43	125	77%	16	34	23%	0	107	59	38	12	2	59	159	100%	0	0	0%
Nursing	97	8	89	92%	8	88	99%	0	1	1%	0	9	29	36	19	4	2	22	25%	6	67	75%
Pharmacy	106	47	59	56%	33	49	77%	14	10	23%	0	3	0	0	0	0	38	45	78%	9	14	22%
Public Health	48	18	30	63%	15	27	88%	3	3	13%	0	24	11	9	1	3	3	3	13%	15	27	88%
GRADUATE COLLEGE (MS, PhD)	221	104	117	53%	39	65	47%	65	52	53%	0	43	94	68	11	5	2	11	6%	102	106	94%
Allied Health	27	2	25	93%	1	16	63%	1	9	37%	0	14	6	6	1	0	0	5	19%	2	20	81%
Dentistry	19	14	5	26%	1	1	11%	13	4	89%	0	1	13	5	0	0	2	2	21%	12	3	79%
Graduate -CTS	14	8	6	43%	3	5	57%	5	1	43%	0	0	2	11	1	0	0	0	0%	8	6	100%
Medicine	104	54	50	48%	20	23	41%	34	27	59%	0	22	51	28	2	1	0	1	1%	54	49	99%
Nursing	8	0	8	100%	0	8	100%	0	0	0%	0	0	1	0	3	4	0	3	38%	0	5	63%
Pharmacy	19	8	11	58%	3	4	37%	5	7	63%	0	2	9	7	1	0	0	0	0%	8	11	100%
Public Health	30	18	12	40%	11	8	63%	7	4	37%	0	4	12	11	3	0	0	0	0%	18	12	100%
TOTAL OUHSC	1915	689	1226	64%	536	1010	81%	153	216	19%	15	960	501	248	66	20	429	783	63%	260	443	37%
Allied Health	523	107	416	80%	95	339	83%	12	77	17%	15	381	75	34	11	5	72	255	63%	35	161	37%
Dentistry	251	143	108	43%	100	81	72%	43	27	28%	0	127	99	23	2	0	39	26	26%	104	82	74%
Graduate -CTS	14	8	6	43%	3	5	57%	5	1	43%	0	0	2	11	1	0	0	0	0%	8	6	100%
Medicine	649	299	350	54%	238	275	79%	61	75	21%	0	325	222	84	15	3	245	301	84%	54	49	16%
Nursing	265	37	228	86%	35	216	95%	2	12	5%	0	91	69	66	31	8	31	153	69%	6	75	31%
Pharmacy	125	55	70	56%	36	53	71%	19	17	29%	0	5	9	7	1	0	38	45	66%	17	25	34%
Public Health	78	36	42	54%	26	35	78%	10	7	22%	0	28	23	20	4	3	3	3	8%	33	39	92%
Norman Inter-Campus	8	4	4	50%	3	4	88%	1	0	13%	0	2	2	3	0	1	1	0	13%	3	4	88%
Non-Degree	2	0	2	100%	0	2	100%	0	0	0%	0	1	0	0	1	0	0	0	0%	0	2	100%

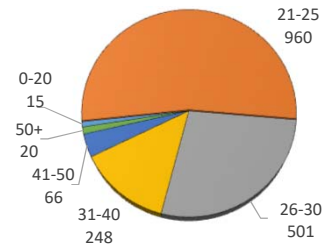
ENROLLMENT BY GENDER



RESIDENCY STATUS



AGE DISTRIBUTION



ENROLLMENT STATUS

