

# ADMITTED & ENROLLED BY LEVEL REPORT

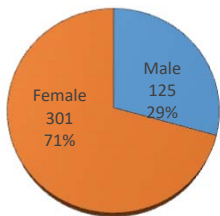
Summer 2018

Gender, Residency, Age & Full/Part Time Totals

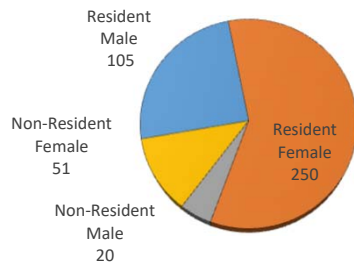
University of Oklahoma Health Sciences Center

LEVEL/COLLEGE	GENDER				RESIDENCY STATUS						AGE DISTRIBUTION						ENROLLMENT STATUS					
	TOT	Male	Female	%F	RESIDENT			NON-RESIDENT			0-20	21-25	26-30	31-40	41-50	>50+ Unkn	FULL TIME			PART TIME		
					Male	Female	%	Male	Female	%							Male	Female	%F	Male	Female	%F
<b>UNDERGRADUATE</b>	<b>128</b>	<b>24</b>	<b>104</b>	<b>81%</b>	<b>23</b>	<b>92</b>	<b>90%</b>	<b>1</b>	<b>12</b>	<b>10%</b>	<b>11</b>	<b>79</b>	<b>17</b>	<b>16</b>	<b>4</b>	<b>1</b>	<b>23</b>	<b>98</b>	<b>95%</b>	<b>1</b>	<b>6</b>	<b>5%</b>
Allied Health	54	12	42	78%	12	37	91%	0	5	9%	11	33	4	5	0	1	11	36	87%	1	6	13%
Dentistry	0	0	0	-	0	0	-	0	0	-	0	0	0	0	0	0	0	0	-	0	0	-
Nursing	74	12	62	84%	11	55	89%	1	7	11%	0	46	13	11	4	0	12	62	100%	0	0	0%
<b>HEALTH PROFESSIONAL</b>	<b>284</b>	<b>95</b>	<b>189</b>	<b>67%</b>	<b>82</b>	<b>155</b>	<b>83%</b>	<b>13</b>	<b>34</b>	<b>17%</b>	<b>2</b>	<b>182</b>	<b>64</b>	<b>30</b>	<b>5</b>	<b>1</b>	<b>56</b>	<b>146</b>	<b>71%</b>	<b>39</b>	<b>43</b>	<b>29%</b>
Allied Health	109	35	74	68%	33	61	86%	2	13	14%	2	89	13	5	0	0	35	74	100%	0	0	0%
Dentistry	63	36	27	43%	31	16	75%	5	11	25%	0	42	16	4	1	0	0	0	0%	36	27	100%
Medicine -MD	0	0	0	-	0	0	-	0	0	-	0	0	0	0	0	0	0	0	-	0	0	-
Medicine -PA	74	19	55	74%	13	46	80%	6	9	20%	0	47	19	6	2	0	19	55	100%	0	0	0%
Nursing	38	5	33	87%	5	32	97%	0	1	3%	0	4	16	15	2	1	2	17	50%	3	16	50%
Pharmacy	0	0	0	-	0	0	-	0	0	-	0	0	0	0	0	0	0	0	-	0	0	-
Public Health	0	0	0	-	0	0	-	0	0	-	0	0	0	0	0	0	0	0	-	0	0	-
<b>GRADUATE COLLEGE (MS, PhD)</b>	<b>9</b>	<b>5</b>	<b>4</b>	<b>44%</b>	<b>0</b>	<b>1</b>	<b>11%</b>	<b>5</b>	<b>3</b>	<b>89%</b>	<b>0</b>	<b>4</b>	<b>4</b>	<b>1</b>	<b>0</b>	<b>0</b>	<b>0</b>	<b>1</b>	<b>11%</b>	<b>5</b>	<b>3</b>	<b>89%</b>
Allied Health	3	0	3	100%	0	1	33%	0	2	67%	0	3	0	0	0	0	0	1	33%	0	2	67%
Dentistry	5	5	0	0%	0	0	0%	5	0	100%	0	1	3	1	0	0	0	0	0%	5	0	100%
Graduate -CTS	0	0	0	-	0	0	-	0	0	-	0	0	0	0	0	0	0	0	-	0	0	-
Medicine	1	0	1	100%	0	0	0%	0	1	100%	0	0	1	0	0	0	0	0	0%	0	1	100%
Nursing	0	0	0	-	0	0	-	0	0	-	0	0	0	0	0	0	0	0	-	0	0	-
Pharmacy	0	0	0	-	0	0	-	0	0	-	0	0	0	0	0	0	0	0	-	0	0	-
Public Health	0	0	0	-	0	0	-	0	0	-	0	0	0	0	0	0	0	0	-	0	0	-
<b>TOTAL OUHSC</b>	<b>426</b>	<b>125</b>	<b>301</b>	<b>71%</b>	<b>105</b>	<b>250</b>	<b>83%</b>	<b>20</b>	<b>51</b>	<b>17%</b>	<b>11</b>	<b>269</b>	<b>85</b>	<b>47</b>	<b>10</b>	<b>2</b>	<b>79</b>	<b>245</b>	<b>76%</b>	<b>46</b>	<b>56</b>	<b>24%</b>
Allied Health	166	47	119	72%	45	99	87%	2	20	13%	11	125	17	10	0	1	46	111	95%	1	8	5%
Dentistry	68	41	27	40%	31	16	69%	10	11	31%	0	43	19	5	1	0	0	0	0%	41	27	100%
Graduate -CTS	0	0	0	-	0	0	-	0	0	-	0	0	0	0	0	0	0	0	-	0	0	-
Medicine	75	19	56	75%	13	46	79%	6	10	21%	0	47	20	6	2	0	19	55	99%	0	1	1%
Nursing	112	17	95	85%	16	87	92%	1	8	8%	0	50	29	26	6	1	14	79	83%	3	16	17%
Pharmacy	0	0	0	-	0	0	-	0	0	-	0	0	0	0	0	0	0	0	-	0	0	-
Public Health	0	0	0	-	0	0	-	0	0	-	0	0	0	0	0	0	0	0	-	0	0	-
Norman Inter-Campus	0	0	0	-	0	0	-	0	0	-	0	0	0	0	0	0	0	0	-	0	0	-
Non-Degree	5	1	4	80%	0	2	40%	1	2	60%	0	4	0	0	1	0	0	0	0%	1	4	100%

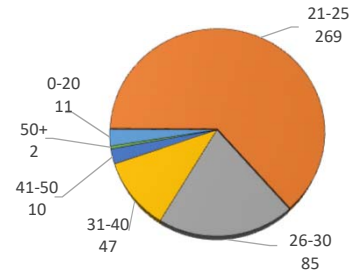
A&E BY GENDER



RESIDENCY STATUS



AGE DISTRIBUTION



ENROLLMENT STATUS

