

ADMITTED & ENROLLED BY LEVEL REPORT

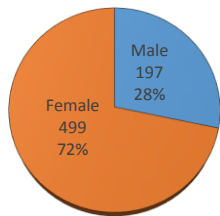
Fall 2018

Gender, Residency, Age & Full/Part Time Totals

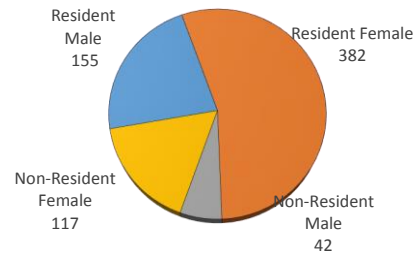
University of Oklahoma Health Sciences Center

LEVEL/COLLEGE	GENDER				RESIDENCY STATUS						AGE DISTRIBUTION						ENROLLMENT STATUS					
	TOT	Male	Female	%F	RESIDENT			NON-RESIDENT			0-20	21-25	26-30	31-40	41-50	>50+ Unkn	FULL TIME			PART TIME		
					Male	Female	%	Male	Female	%							Male	Female	%F	Male	Female	%F
UNDERGRADUATE	277	24	253	91%	23	189	77%	1	64	23%	115	112	17	19	10	4	23	244	96%	1	9	4%
Allied Health	39	1	38	97%	0	27	69%	1	11	31%	26	7	1	2	2	1	0	32	82%	1	6	18%
Dentistry	46	0	46	100%	0	43	93%	0	3	7%	12	32	2	0	0	0	0	46	100%	0	0	0%
Nursing	192	23	169	88%	23	119	74%	0	50	26%	77	73	14	17	8	3	23	166	98%	0	3	2%
HEALTH PROFESSIONAL	343	140	203	59%	122	170	85%	18	33	15%	8	259	37	31	4	4	138	190	96%	2	13	4%
Allied Health	66	6	60	91%	5	46	77%	1	14	23%	1	51	6	7	0	1	5	59	97%	1	1	3%
Dentistry	0	0	0	-	0	0	-	0	0	-	0	0	0	0	0	0	0	0	-	0	0	-
Medicine -MD	165	97	68	41%	84	63	89%	13	5	11%	3	137	17	8	0	0	97	68	100%	0	0	0%
Medicine -PA	0	0	0	-	0	0	-	0	0	-	0	0	0	0	0	0	0	0	-	0	0	-
Nursing	20	2	18	90%	2	17	95%	0	1	5%	0	1	5	11	0	3	2	8	50%	0	10	50%
Pharmacy	61	27	34	56%	24	27	84%	3	7	16%	4	46	7	2	2	0	27	34	100%	0	0	0%
Public Health	31	8	23	74%	7	17	77%	1	6	23%	0	24	2	3	2	0	7	21	90%	1	2	10%
GRADUATE COLLEGE (MS, PhD)	64	30	34	53%	8	15	36%	22	19	64%	0	29	22	8	5	0	26	27	83%	4	7	17%
Allied Health	0	0	0	-	0	0	-	0	0	-	0	0	0	0	0	0	0	0	-	0	0	-
Dentistry	0	0	0	-	0	0	-	0	0	-	0	0	0	0	0	0	0	0	-	0	0	-
Graduate -CTS	8	4	4	50%	1	4	63%	3	0	38%	0	0	3	3	2	0	4	1	63%	0	3	38%
Medicine	37	18	19	51%	5	3	22%	13	16	78%	0	24	9	4	0	0	14	17	84%	4	2	16%
Nursing	3	0	3	100%	0	2	67%	0	1	33%	0	0	0	1	2	0	0	2	67%	0	1	33%
Pharmacy	5	3	2	40%	0	2	40%	3	0	60%	0	1	4	0	0	0	3	2	100%	0	0	0%
Public Health	11	5	6	55%	2	4	55%	3	2	45%	0	4	6	0	1	0	5	5	91%	0	1	9%
TOTAL OUHSC	696	197	499	72%	155	382	77%	42	117	23%	122	406	78	61	19	9	187	461	93%	10	38	7%
Allied Health	105	7	98	93%	5	73	74%	2	25	26%	26	58	7	9	2	2	5	91	91%	2	7	9%
Dentistry	46	0	46	100%	0	43	93%	0	3	7%	12	32	2	0	0	0	0	46	100%	0	0	0%
Graduate -CTS	8	4	4	50%	1	4	63%	3	0	38%	0	0	3	3	2	0	4	1	63%	0	3	38%
Medicine	202	115	87	43%	89	66	77%	26	21	23%	3	161	26	12	0	0	111	85	97%	4	2	3%
Nursing	215	25	190	88%	25	138	76%	0	52	24%	77	74	19	29	10	6	25	176	93%	0	14	7%
Pharmacy	66	30	36	55%	24	29	80%	6	7	20%	4	47	11	2	2	0	30	36	100%	0	0	0%
Public Health	42	13	29	69%	9	21	71%	4	8	29%	0	28	8	3	3	0	12	26	90%	1	3	10%
Norman Inter-Campus	0	0	0	-	0	0	-	0	0	-	0	0	0	0	0	0	0	0	-	0	0	-
Non-Degree	12	3	9	75%	2	8	83%	1	1	17%	0	6	2	3	0	1	0	0	0%	3	9	100%

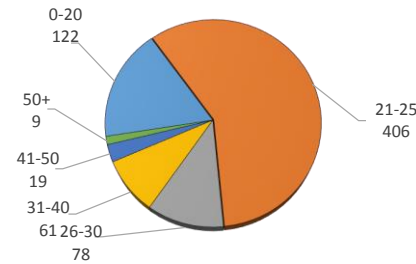
ENROLLMENT BY GENDER



RESIDENCY STATUS



AGE DISTRIBUTION



ENROLLMENT STATUS

