

ADMITTED & ENROLLED BY LEVEL REPORT

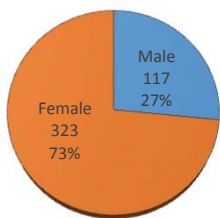
Summer 2017

Gender, Residency, Age & Full/Part Time Totals

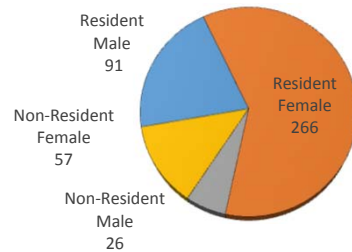
University of Oklahoma Health Sciences Center

LEVEL/COLLEGE	GENDER			RESIDENCY STATUS						AGE DISTRIBUTION						ENROLLMENT STATUS						
	TOT	Male	Female	%F	RESIDENT			NON-RESIDENT			0-20	21-25	26-30	31-40	41-50	>50+ Unkn	FULL TIME			PART TIME		
					Male	Female	%	Male	Female	%							Male	Female	%F	Male	Female	%F
UNDERGRADUATE	129	27	102	79%	24	98	95%	3	4	5%	10	64	26	21	7	1	26	100	98%	1	2	2%
Allied Health	53	9	44	83%	7	43	94%	2	1	6%	10	30	3	7	3	0	8	42	94%	1	2	6%
Dentistry	0	0	0	-	0	0	-	0	0	-	0	0	0	0	0	0	0	0	-	0	0	-
Nursing	76	18	58	76%	17	55	95%	1	3	5%	0	34	23	14	4	1	18	58	100%	0	0	0%
HEALTH PROFESSIONAL	292	85	207	71%	64	159	76%	21	48	24%	6	194	45	36	9	2	32	86	40%	53	121	60%
Allied Health	131	27	104	79%	22	79	77%	5	25	23%	5	103	15	7	1	0	6	28	26%	21	76	74%
Dentistry	60	31	29	48%	23	23	77%	8	6	23%	1	49	10	0	0	0	0	0	0%	31	29	100%
Medicine -MD	0	0	0	-	0	0	-	0	0	-	0	0	0	0	0	0	0	0	-	0	0	-
Medicine -PA	76	25	51	67%	17	35	68%	8	16	32%	0	35	13	20	7	1	25	51	100%	0	0	0%
Nursing	25	2	23	92%	2	22	96%	0	1	4%	0	7	7	9	1	1	1	7	32%	1	16	68%
Pharmacy	0	0	0	-	0	0	-	0	0	-	0	0	0	0	0	0	0	0	-	0	0	-
Public Health	0	0	0	-	0	0	-	0	0	-	0	0	0	0	0	0	0	0	-	0	0	-
GRADUATE COLLEGE (MS, PhD)	11	4	7	64%	2	5	64%	2	2	36%	0	4	7	0	0	0	0	1	9%	4	6	91%
Allied Health	5	0	5	100%	0	5	100%	0	0	0%	0	3	2	0	0	0	0	1	20%	0	4	80%
Dentistry	4	2	2	50%	0	0	0%	2	2	100%	0	0	4	0	0	0	0	0	0%	2	2	100%
Graduate -CTS	0	0	0	-	0	0	-	0	0	-	0	0	0	0	0	0	0	0	-	0	0	-
Medicine	2	2	0	0%	2	0	100%	0	0	0%	0	1	1	0	0	0	0	0	0%	2	0	100%
Nursing	0	0	0	-	0	0	-	0	0	-	0	0	0	0	0	0	0	0	-	0	0	-
Pharmacy	0	0	0	-	0	0	-	0	0	-	0	0	0	0	0	0	0	0	-	0	0	-
Public Health	0	0	0	-	0	0	-	0	0	-	0	0	0	0	0	0	0	0	-	0	0	-
TOTAL OUHSC	440	117	323	73%	91	266	81%	26	57	19%	11	269	78	57	16	4	58	188	56%	59	135	44%
Allied Health	189	36	153	81%	29	127	83%	7	26	17%	10	136	20	14	4	0	14	71	45%	22	82	55%
Dentistry	64	33	31	48%	23	23	72%	10	8	28%	1	49	14	0	0	0	0	0	0%	33	31	100%
Graduate -CTS	0	0	0	-	0	0	-	0	0	-	0	0	0	0	0	0	0	0	-	0	0	-
Medicine	78	27	51	65%	19	35	69%	8	16	31%	0	36	14	20	7	1	25	51	97%	2	0	3%
Nursing	101	20	81	80%	19	77	95%	1	4	5%	0	41	30	23	5	2	19	65	83%	1	16	17%
Pharmacy	0	0	0	-	0	0	-	0	0	-	0	0	0	0	0	0	0	0	-	0	0	-
Public Health	0	0	0	-	0	0	-	0	0	-	0	0	0	0	0	0	0	0	-	0	0	-
Norman Inter-Campus	0	0	0	-	0	0	-	0	0	-	0	0	0	0	0	0	0	0	-	0	0	-
Non-Degree	8	1	7	88%	1	4	63%	0	3	38%	0	7	0	0	0	1	0	1	13%	1	6	88%

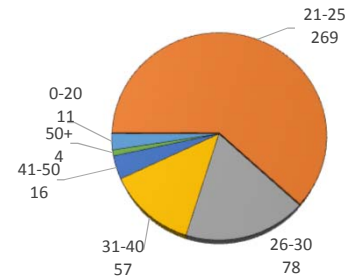
A&E BY GENDER



RESIDENCY STATUS



AGE DISTRIBUTION



ENROLLMENT STATUS

