

ADMITTED BY LEVEL REPORT

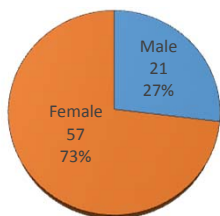
Gender, Residency, Age & Full/Part Time Totals

Spring 2017

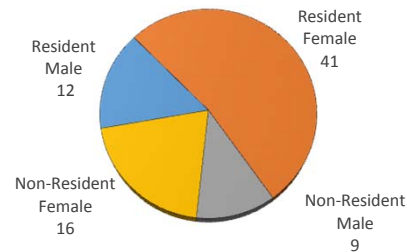
University of Oklahoma Health Sciences Center

LEVEL/COLLEGE	GENDER				RESIDENCY STATUS						AGE DISTRIBUTION					ENROLLMENT STATUS						
	TOT	Male	Female	%F	RESIDENT			NON-RESIDENT			0-20	21-25	26-30	31-40	41-50	>50+ Unkn	FULL TIME			PART TIME		
					Male	Female	%	Male	Female	%							Male	Female	%F	Male	Female	%F
UNDERGRADUATE	24	6	18	75%	5	13	75%	1	5	25%	0	11	5	6	1	1	4	11	63%	2	7	38%
Allied Health	1	0	1	100%	0	1	100%	0	0	0%	0	0	0	1	0	0	0	0	0%	0	1	100%
Dentistry	0	0	0	-	0	0	-	0	0	-	0	0	0	0	0	0	0	0	-	0	0	-
Nursing	23	6	17	74%	5	12	74%	1	5	26%	0	11	5	5	1	1	4	11	65%	2	6	35%
HEALTH PROFESSIONAL	34	10	24	71%	3	17	59%	7	7	41%	0	16	7	7	4	0	0	6	18%	10	18	82%
Allied Health	11	0	11	100%	0	5	45%	0	6	55%	0	9	1	1	0	0	0	1	9%	0	10	91%
Dentistry	0	0	0	-	0	0	-	0	0	-	0	0	0	0	0	0	0	0	-	0	0	-
Medicine -MD	0	0	0	-	0	0	-	0	0	-	0	0	0	0	0	0	0	0	-	0	0	-
Medicine -PA	0	0	0	-	0	0	-	0	0	-	0	0	0	0	0	0	0	0	-	0	0	-
Nursing	9	1	8	89%	0	8	89%	1	0	11%	0	1	0	5	3	0	0	4	44%	1	4	56%
Pharmacy	0	0	0	-	0	0	-	0	0	-	0	0	0	0	0	0	0	0	-	0	0	-
Public Health	14	9	5	36%	3	4	50%	6	1	50%	0	6	6	1	1	0	0	1	7%	9	4	93%
GRADUATE COLLEGE (MS, PhD)	10	4	6	60%	3	3	60%	1	3	40%	0	4	3	3	0	0	1	2	30%	3	4	70%
Allied Health	4	0	4	100%	0	2	50%	0	2	50%	0	3	0	1	0	0	0	0	0%	0	4	100%
Dentistry	0	0	0	-	0	0	-	0	0	-	0	0	0	0	0	0	0	0	-	0	0	-
Graduate -CTS	1	1	0	0%	0	0	0%	1	0	100%	0	0	1	0	0	0	0	0	0%	1	0	100%
Medicine	1	0	1	100%	0	0	0%	0	1	100%	0	0	0	1	0	0	0	1	100%	0	0	0%
Nursing	0	0	0	-	0	0	-	0	0	-	0	0	0	0	0	0	0	0	-	0	0	-
Pharmacy	0	0	0	-	0	0	-	0	0	-	0	0	0	0	0	0	0	0	-	0	0	-
Public Health	4	3	1	25%	3	1	100%	0	0	0%	0	1	2	1	0	0	1	1	50%	2	0	50%
TOTAL OUHSC	78	21	57	73%	12	41	68%	9	16	32%	0	35	17	19	5	2	5	20	32%	16	37	68%
Allied Health	16	0	16	100%	0	8	50%	0	8	50%	0	12	1	3	0	0	0	1	6%	0	15	94%
Dentistry	0	0	0	-	0	0	-	0	0	-	0	0	0	0	0	0	0	0	-	0	0	-
Graduate -CTS	1	1	0	0%	0	0	0%	1	0	100%	0	0	1	0	0	0	0	0	0%	1	0	100%
Medicine	1	0	1	100%	0	0	0%	0	1	100%	0	0	0	1	0	0	0	1	100%	0	0	0%
Nursing	32	7	25	78%	5	20	78%	2	5	22%	0	12	5	10	4	1	4	15	59%	3	10	41%
Pharmacy	0	0	0	-	0	0	-	0	0	-	0	0	0	0	0	0	0	0	-	0	0	-
Public Health	18	12	6	33%	6	5	61%	6	1	39%	0	7	8	2	1	0	1	2	17%	11	4	83%
Norman Inter-Campus	0	0	0	-	0	0	-	0	0	-	0	0	0	0	0	0	0	0	-	0	0	-
Non-Degree	10	1	9	90%	1	8	90%	0	1	10%	0	4	2	3	0	1	0	1	10%	1	8	90%

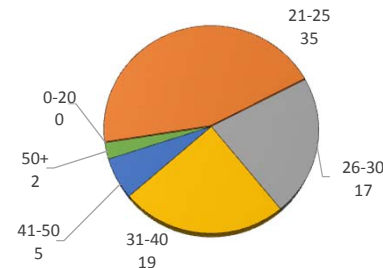
ENROLLMENT BY GENDER



RESIDENCY STATUS



AGE DISTRIBUTION



ENROLLMENT STATUS

