

ADMITTED & ENROLLED BY LEVEL REPORT

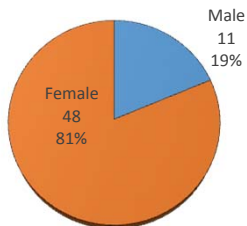
Gender, Residency, Age & Full/Part Time Totals

Spring 2017

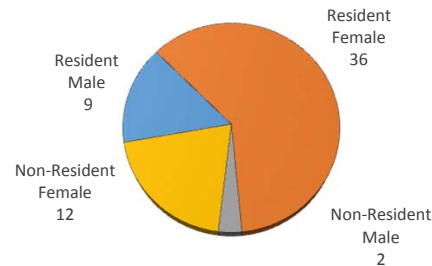
University of Oklahoma Health Sciences Center

LEVEL/COLLEGE	TOT	GENDER			RESIDENCY STATUS						AGE DISTRIBUTION						ENROLLMENT STATUS					
		Male	Female	%F	RESIDENT			NON-RESIDENT			0-20	21-25	26-30	31-40	41-50	>50+ Unkn	FULL TIME			PART TIME		
					Male	Female	%	Male	Female	%							Male	Female	%F	Male	Female	%F
UNDERGRADUATE	21	6	15	71%	5	11	76%	1	4	24%	0	10	4	5	1	1	4	11	71%	2	4	29%
Allied Health	1	0	1	100%	0	1	100%	0	0	0%	0	0	0	1	0	0	0	0	0%	0	1	100%
Dentistry	0	0	0	-	0	0	-	0	0	-	0	0	0	0	0	0	0	0	-	0	0	-
Nursing	20	6	14	70%	5	10	75%	1	4	25%	0	10	4	4	1	1	4	11	75%	2	3	25%
HEALTH PROFESSIONAL	22	1	21	95%	1	15	73%	0	6	27%	0	11	4	5	2	0	0	6	27%	1	15	73%
Allied Health	11	0	11	100%	0	5	45%	0	6	55%	0	9	1	1	0	0	0	1	9%	0	10	91%
Dentistry	0	0	0	-	0	0	-	0	0	-	0	0	0	0	0	0	0	0	-	0	0	-
Medicine -MD	0	0	0	-	0	0	-	0	0	-	0	0	0	0	0	0	0	0	-	0	0	-
Medicine -PA	0	0	0	-	0	0	-	0	0	-	0	0	0	0	0	0	0	0	-	0	0	-
Nursing	7	0	7	100%	0	7	100%	0	0	0%	0	1	0	4	2	0	0	4	57%	0	3	43%
Pharmacy	0	0	0	-	0	0	-	0	0	-	0	0	0	0	0	0	0	0	-	0	0	-
Public Health	4	1	3	75%	1	3	100%	0	0	0%	0	1	3	0	0	0	0	1	25%	1	2	75%
GRADUATE COLLEGE (MS, PhD)	6	3	3	50%	2	2	67%	1	1	33%	0	2	2	2	0	0	1	2	50%	2	1	50%
Allied Health	1	0	1	100%	0	1	100%	0	0	0%	0	1	0	0	0	0	0	0	0%	0	1	100%
Dentistry	0	0	0	-	0	0	-	0	0	-	0	0	0	0	0	0	0	0	-	0	0	-
Graduate -CTS	1	1	0	0%	0	0	0%	1	0	100%	0	0	1	0	0	0	0	0	0%	1	0	100%
Medicine	1	0	1	100%	0	0	0%	0	1	100%	0	0	0	1	0	0	0	1	100%	0	0	0%
Nursing	0	0	0	-	0	0	-	0	0	-	0	0	0	0	0	0	0	0	-	0	0	-
Pharmacy	0	0	0	-	0	0	-	0	0	-	0	0	0	0	0	0	0	0	-	0	0	-
Public Health	3	2	1	33%	2	1	100%	0	0	0%	0	1	1	1	0	0	1	1	67%	1	0	33%
TOTAL OUHSC	59	11	48	81%	9	36	76%	2	12	24%	0	27	12	15	3	2	5	20	42%	6	28	58%
Allied Health	13	0	13	100%	0	7	54%	0	6	46%	0	10	1	2	0	0	0	1	8%	0	12	92%
Dentistry	0	0	0	-	0	0	-	0	0	-	0	0	0	0	0	0	0	0	-	0	0	-
Graduate -CTS	1	1	0	0%	0	0	0%	1	0	100%	0	0	1	0	0	0	0	0	0%	1	0	100%
Medicine	1	0	1	100%	0	0	0%	0	1	100%	0	0	0	1	0	0	0	1	100%	0	0	0%
Nursing	27	6	21	78%	5	17	81%	1	4	19%	0	11	4	8	3	1	4	15	70%	2	6	30%
Pharmacy	0	0	0	-	0	0	-	0	0	-	0	0	0	0	0	0	0	0	-	0	0	-
Public Health	7	3	4	57%	3	4	100%	0	0	0%	0	2	4	1	0	0	1	2	43%	2	2	57%
Norman Inter-Campus	0	0	0	-	0	0	-	0	0	-	0	0	0	0	0	0	0	0	-	0	0	-
Non-Degree	10	1	9	90%	1	8	90%	0	1	10%	0	4	2	3	0	1	0	1	10%	1	8	90%

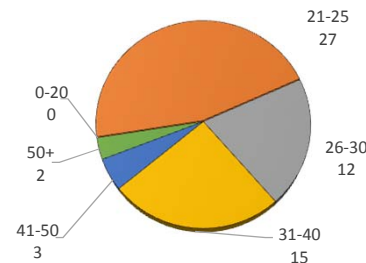
A&E BY GENDER



RESIDENCY STATUS



AGE DISTRIBUTION



ENROLLMENT STATUS

