

ADMITTED BY LEVEL REPORT

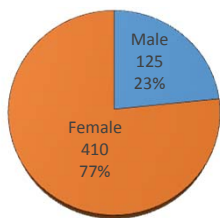
Gender, Residency, Age & Full/Part Time Totals

Summer 2016

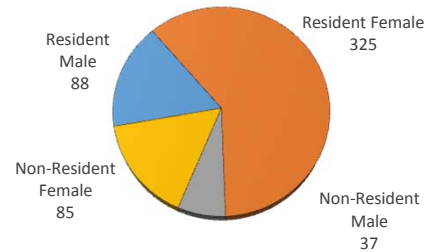
University of Oklahoma Health Sciences Center

LEVEL/COLLEGE	GENDER			RESIDENCY STATUS						AGE DISTRIBUTION						ENROLLMENT STATUS						
	TOT	Male	Female	%F	RESIDENT			NON-RESIDENT			0-20	21-25	26-30	31-40	41-50	>50+ Unkn	FULL TIME			PART TIME		
					Male	Female	%	Male	Female	%							Male	Female	%F	Male	Female	%F
UNDERGRADUATE	170	30	140	82%	27	122	88%	3	18	12%	14	96	32	23	2	3	23	103	74%	7	37	26%
Allied Health	72	12	60	83%	11	54	90%	1	6	10%	14	45	4	9	0	0	8	43	71%	4	17	29%
Dentistry	0	0	0	-	0	0	-	0	0	-	0	0	0	0	0	0	0	0	-	0	0	-
Nursing	98	18	80	82%	16	68	86%	2	12	14%	0	51	28	14	2	3	15	60	77%	3	20	23%
HEALTH PROFESSIONAL	338	88	250	74%	59	194	75%	29	56	25%	5	207	58	47	14	7	22	76	29%	66	174	71%
Allied Health	137	29	108	79%	21	81	74%	8	27	26%	4	114	12	4	2	1	2	17	14%	27	91	86%
Dentistry	71	35	36	51%	21	22	61%	14	14	39%	1	45	18	7	0	0	0	0	0%	35	36	100%
Medicine -MD	0	0	0	-	0	0	-	0	0	-	0	0	0	0	0	0	0	0	-	0	0	-
Medicine -PA	75	18	57	76%	11	44	73%	7	13	27%	0	47	13	13	2	0	18	54	96%	0	3	4%
Nursing	55	6	49	89%	6	47	96%	0	2	4%	0	1	15	23	10	6	2	5	13%	4	44	87%
Pharmacy	0	0	0	-	0	0	-	0	0	-	0	0	0	0	0	0	0	0	-	0	0	-
Public Health	0	0	0	-	0	0	-	0	0	-	0	0	0	0	0	0	0	0	-	0	0	-
GRADUATE COLLEGE (MS, PhD)	7	5	2	29%	1	1	29%	4	1	71%	0	0	6	0	1	0	0	0	0%	5	2	100%
Allied Health	0	0	0	-	0	0	-	0	0	-	0	0	0	0	0	0	0	0	-	0	0	-
Dentistry	7	5	2	29%	1	1	29%	4	1	71%	0	0	6	0	1	0	0	0	0%	5	2	100%
Graduate -CTS	0	0	0	-	0	0	-	0	0	-	0	0	0	0	0	0	0	0	-	0	0	-
Medicine	0	0	0	-	0	0	-	0	0	-	0	0	0	0	0	0	0	0	-	0	0	-
Nursing	0	0	0	-	0	0	-	0	0	-	0	0	0	0	0	0	0	0	-	0	0	-
Pharmacy	0	0	0	-	0	0	-	0	0	-	0	0	0	0	0	0	0	0	-	0	0	-
Public Health	0	0	0	-	0	0	-	0	0	-	0	0	0	0	0	0	0	0	-	0	0	-
TOTAL OUHSC	535	125	410	77%	88	325	77%	37	85	23%	22	315	97	70	17	10	45	179	42%	80	231	58%
Allied Health	209	41	168	80%	32	135	80%	9	33	20%	14	159	16	13	2	1	10	60	33%	31	108	67%
Dentistry	78	40	38	49%	22	23	58%	18	15	42%	1	45	24	7	1	0	0	0	0%	40	38	100%
Graduate -CTS	0	0	0	-	0	0	-	0	0	-	0	0	0	0	0	0	0	0	-	0	0	-
Medicine	75	18	57	76%	11	44	73%	7	13	27%	0	47	13	13	2	0	18	54	96%	0	3	4%
Nursing	153	24	129	84%	22	115	90%	2	14	10%	0	52	43	37	12	9	17	65	54%	7	64	46%
Pharmacy	0	0	0	-	0	0	-	0	0	-	0	0	0	0	0	0	0	0	-	0	0	-
Public Health	0	0	0	-	0	0	-	0	0	-	0	0	0	0	0	0	0	0	-	0	0	-
Norman Inter-Campus	0	0	0	-	0	0	-	0	0	-	0	0	0	0	0	0	0	0	-	0	0	-
Non-Degree	20	2	18	90%	1	8	45%	1	10	55%	7	12	1	0	0	0	0	0	0%	2	18	100%

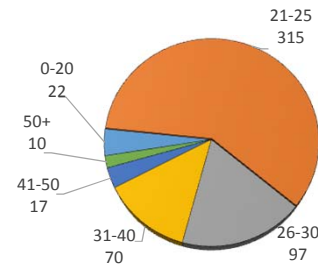
ADMITTED BY GENDER



RESIDENCY STATUS



AGE DISTRIBUTION



ENROLLMENT STATUS

