

ADMITTED BY LEVEL REPORT

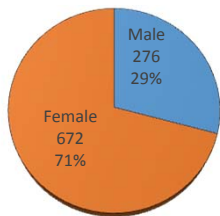
Fall 2015

Gender, Residency, Age & Full/Part Time Totals

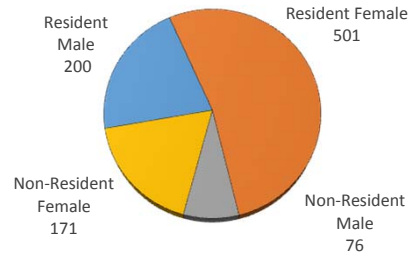
University of Oklahoma Health Sciences Center

LEVEL/COLLEGE	GENDER				RESIDENCY STATUS						AGE DISTRIBUTION						ENROLLMENT STATUS					
	TOT	Male	Female	%F	RESIDENT			NON-RESIDENT			0-20	21-25	26-30	31-40	41-50	>50+ Unkn	FULL TIME			PART TIME		
					Male	Female	%	Male	Female	%							Male	Female	%F	Male	Female	%F
UNDERGRADUATE	386	40	346	90%	36	282	82%	4	64	18%	102	177	51	40	16	0	32	286	82%	8	60	18%
Allied Health	56	5	51	91%	4	33	66%	1	18	34%	32	18	3	3	0	0	5	45	89%	0	6	11%
Dentistry	54	2	52	96%	2	46	89%	0	6	11%	8	40	3	2	1	0	2	44	85%	0	8	15%
Nursing	276	33	243	88%	30	203	84%	3	40	16%	62	119	45	35	15	0	25	197	80%	8	46	20%
HEALTH PROFESSIONAL	481	202	279	58%	150	196	72%	52	83	28%	9	378	64	23	4	3	151	176	68%	51	103	32%
Allied Health	79	3	76	96%	3	38	52%	0	38	48%	1	69	8	1	0	0	2	38	51%	1	38	49%
Dentistry	0	0	0	-	0	0	-	0	0	-	0	0	0	0	0	0	0	0	-	0	0	-
Medicine -MD	198	112	86	43%	95	69	83%	17	17	17%	2	170	23	3	0	0	94	66	81%	18	20	19%
Medicine -PA	0	0	0	-	0	0	-	0	0	-	0	0	0	0	0	0	0	0	-	0	0	-
Nursing	25	3	22	88%	3	21	96%	0	1	4%	0	6	7	7	2	3	0	6	24%	3	16	76%
Pharmacy	117	61	56	48%	34	41	64%	27	15	36%	5	91	15	6	0	0	48	46	80%	13	10	20%
Public Health	62	23	39	63%	15	27	68%	8	12	32%	1	42	11	6	2	0	7	20	44%	16	19	56%
GRADUATE COLLEGE (MS, PhD)	75	31	44	59%	13	20	44%	18	24	56%	1	33	20	16	3	2	16	30	61%	15	14	39%
Allied Health	14	4	10	71%	3	6	64%	1	4	36%	0	7	3	3	1	0	1	9	71%	3	1	29%
Dentistry	0	0	0	-	0	0	-	0	0	-	0	0	0	0	0	0	0	0	-	0	0	-
Graduate -CTS	4	3	1	25%	2	1	75%	1	0	25%	0	0	1	3	0	0	2	1	75%	1	0	25%
Medicine	33	13	20	61%	5	7	36%	8	13	64%	0	18	9	6	0	0	9	15	73%	4	5	27%
Nursing	6	0	6	100%	0	5	83%	0	1	17%	0	0	1	1	2	2	0	3	50%	0	3	50%
Pharmacy	4	0	4	100%	0	0	0%	0	4	100%	0	2	1	1	0	0	0	2	50%	0	2	50%
Public Health	14	11	3	21%	3	1	29%	8	2	71%	1	6	5	2	0	0	4	0	29%	7	3	71%
TOTAL OUHSC	948	276	672	71%	200	501	74%	76	171	26%	111	588	137	82	23	6	199	492	73%	77	180	27%
Allied Health	149	12	137	92%	10	77	58%	2	60	42%	32	94	14	7	1	0	8	92	67%	4	45	33%
Dentistry	54	2	52	96%	2	46	89%	0	6	11%	8	40	3	2	1	0	2	44	85%	0	8	15%
Graduate -CTS	4	3	1	25%	2	1	75%	1	0	25%	0	0	1	3	0	0	2	1	75%	1	0	25%
Medicine	231	125	106	46%	100	76	76%	25	30	24%	2	188	32	9	0	0	103	81	80%	22	25	20%
Nursing	307	36	271	88%	33	229	85%	3	42	15%	62	125	53	43	19	5	25	206	75%	11	65	25%
Pharmacy	121	61	60	50%	34	41	62%	27	19	38%	5	93	16	7	0	0	48	48	79%	13	12	21%
Public Health	76	34	42	55%	18	28	61%	16	14	39%	2	48	16	8	2	0	11	20	41%	23	22	59%
Norman Inter-Campus	0	0	0	-	0	0	-	0	0	-	0	0	0	0	0	0	0	0	-	0	0	-
Non-Degree	6	3	3	50%	1	3	67%	2	0	33%	0	0	2	3	0	1	0	0	0%	3	3	100%

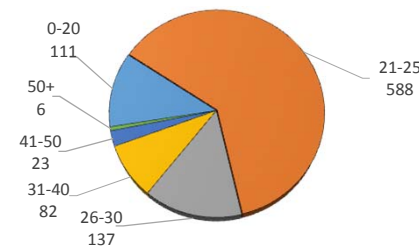
ENROLLMENT BY GENDER



RESIDENCY STATUS



AGE DISTRIBUTION



ENROLLMENT STATUS

