

# ENROLLMENT BY LEVEL REPORT

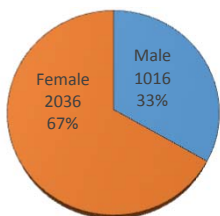
Spring 2018

Gender, Residency, Age & Full/Part Time Totals

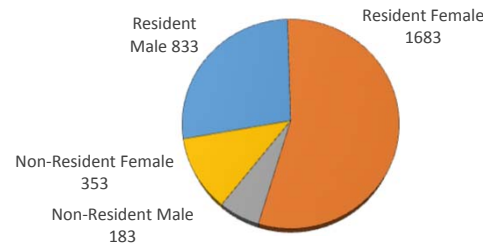
University of Oklahoma Health Sciences Center

LEVEL/COLLEGE	GENDER				RESIDENCY STATUS						AGE DISTRIBUTION						ENROLLMENT STATUS					
	TOT	Male	Female	%F	RESIDENT			NON-RESIDENT			0-20	21-25	26-30	31-40	41-50	>50+ Unkn	FULL TIME			PART TIME		
					Male	Female	%	Male	Female	%							Male	Female	%F	Male	Female	%F
<b>UNDERGRADUATE</b>	<b>788</b>	<b>94</b>	<b>694</b>	<b>88%</b>	<b>87</b>	<b>569</b>	<b>83%</b>	<b>7</b>	<b>125</b>	<b>17%</b>	<b>77</b>	<b>487</b>	<b>91</b>	<b>100</b>	<b>25</b>	<b>8</b>	<b>87</b>	<b>658</b>	<b>95%</b>	<b>7</b>	<b>36</b>	<b>5%</b>
Allied Health	188	21	167	89%	19	132	80%	2	35	20%	21	126	14	18	6	3	19	148	89%	2	19	11%
Dentistry	92	0	92	100%	0	91	99%	0	1	1%	7	69	10	6	0	0	0	92	100%	0	0	0%
Nursing	508	73	435	86%	68	346	81%	5	89	19%	49	292	67	76	19	5	68	418	96%	5	17	4%
<b>HEALTH PROFESSIONAL</b>	<b>1977</b>	<b>788</b>	<b>1189</b>	<b>60%</b>	<b>683</b>	<b>1021</b>	<b>86%</b>	<b>105</b>	<b>168</b>	<b>14%</b>	<b>1</b>	<b>1043</b>	<b>600</b>	<b>232</b>	<b>72</b>	<b>29</b>	<b>652</b>	<b>886</b>	<b>78%</b>	<b>136</b>	<b>303</b>	<b>22%</b>
Allied Health	405	71	334	82%	63	262	80%	8	72	20%	0	298	67	25	8	7	66	272	83%	5	62	17%
Dentistry	228	124	104	46%	93	85	78%	31	19	22%	0	100	102	24	2	0	124	104	100%	0	0	0%
Medicine -MD	637	360	277	43%	336	257	93%	24	20	7%	0	406	205	23	3	0	268	206	74%	92	71	26%
Medicine -PA	146	40	106	73%	30	80	75%	10	26	25%	0	66	38	33	8	1	40	103	98%	0	3	2%
Nursing	169	23	146	86%	23	145	99%	0	1	1%	0	9	34	72	35	19	1	13	8%	22	133	92%
Pharmacy	305	135	170	56%	113	145	85%	22	25	15%	1	125	130	40	9	0	131	163	96%	4	7	4%
Public Health	87	35	52	60%	25	47	83%	10	5	17%	0	39	24	15	7	2	22	25	54%	13	27	46%
<b>GRADUATE COLLEGE (MS, PhD)</b>	<b>249</b>	<b>122</b>	<b>127</b>	<b>51%</b>	<b>53</b>	<b>73</b>	<b>51%</b>	<b>69</b>	<b>54</b>	<b>49%</b>	<b>0</b>	<b>50</b>	<b>106</b>	<b>74</b>	<b>12</b>	<b>7</b>	<b>43</b>	<b>50</b>	<b>37%</b>	<b>79</b>	<b>77</b>	<b>63%</b>
Allied Health	26	4	22	85%	3	17	77%	1	5	23%	0	9	9	6	2	0	1	7	31%	3	15	69%
Dentistry	14	9	5	36%	1	1	14%	8	4	86%	0	0	10	4	0	0	9	5	100%	0	0	0%
Graduate -CTS	16	10	6	38%	5	5	63%	5	1	38%	0	0	5	9	2	0	1	2	19%	9	4	81%
Medicine	117	63	54	46%	21	24	38%	42	30	62%	0	32	51	32	1	1	19	23	36%	44	31	64%
Nursing	11	0	11	100%	0	10	91%	0	1	9%	0	0	1	1	3	6	0	6	55%	0	5	45%
Pharmacy	21	9	12	57%	4	4	38%	0	2	13%	0	2	13	5	1	0	5	3	38%	4	9	62%
Public Health	44	27	17	39%	19	12	70%	8	5	30%	0	7	17	17	3	0	8	4	27%	19	13	73%
<b>TOTAL OUHSC</b>	<b>3052</b>	<b>1016</b>	<b>2036</b>	<b>67%</b>	<b>833</b>	<b>1683</b>	<b>82%</b>	<b>183</b>	<b>353</b>	<b>18%</b>	<b>79</b>	<b>1601</b>	<b>801</b>	<b>413</b>	<b>112</b>	<b>46</b>	<b>786</b>	<b>1596</b>	<b>78%</b>	<b>230</b>	<b>440</b>	<b>22%</b>
Allied Health	619	96	523	84%	85	411	80%	11	112	20%	21	433	90	49	16	10	86	427	83%	10	96	17%
Dentistry	334	133	201	60%	94	177	81%	39	24	19%	7	169	122	34	2	0	133	201	100%	0	0	0%
Graduate -CTS	16	10	6	38%	5	5	63%	5	1	38%	0	0	5	9	2	0	1	2	19%	9	4	81%
Medicine	900	463	437	49%	387	361	83%	76	76	17%	0	504	294	88	12	2	327	332	73%	136	105	27%
Nursing	688	96	592	86%	91	501	86%	5	91	14%	49	301	102	149	57	30	69	437	74%	27	155	26%
Pharmacy	326	144	182	56%	117	149	82%	27	33	18%	1	127	143	45	10	0	136	166	93%	8	16	7%
Public Health	131	62	69	53%	44	59	79%	18	10	21%	0	46	41	32	10	2	30	29	45%	32	40	55%
Norman Inter-Campus	22	9	13	59%	7	9	73%	2	4	27%	0	12	4	3	2	1	4	2	27%	5	11	73%
Non-Degree	16	3	13	81%	3	11	88%	0	2	13%	1	9	0	4	1	1	0	0	0%	3	13	100%

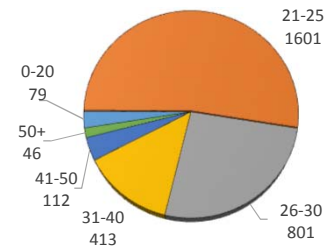
ENROLLMENT BY GENDER



RESIDENCY STATUS



AGE DISTRIBUTION



ENROLLMENT STATUS

