

ADMITTED & ENROLLED BY LEVEL REPORT

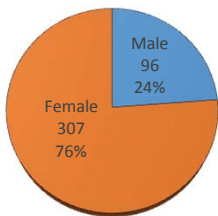
Summer 2016

Gender, Residency, Age & Full/Part Time Totals

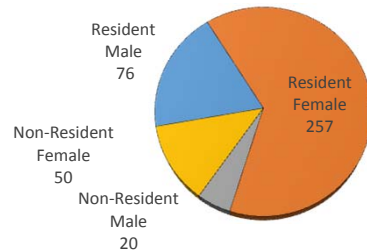
University of Oklahoma Health Sciences Center

LEVEL/COLLEGE	GENDER				RESIDENCY STATUS						AGE DISTRIBUTION						ENROLLMENT STATUS					
	TOT	Male	Female	%F	RESIDENT			NON-RESIDENT			0-20	21-25	26-30	31-40	41-50	>50+ Unkn	FULL TIME			PART TIME		
					Male	Female	%	Male	Female	%							Male	Female	%F	Male	Female	%F
UNDERGRADUATE	127	23	104	82%	22	98	94%	1	6	6%	10	71	25	16	2	3	23	103	99%	0	1	1%
Allied Health	52	8	44	85%	7	41	92%	1	3	8%	10	33	3	6	0	0	8	43	98%	0	1	2%
Dentistry	0	0	0	-	0	0	-	0	0	-	0	0	0	0	0	0	0	0	-	0	0	-
Nursing	75	15	60	80%	15	57	96%	0	3	4%	0	38	22	10	2	3	15	60	100%	0	0	0%
HEALTH PROFESSIONAL	269	70	199	74%	53	158	78%	17	41	22%	4	167	47	36	10	5	22	76	36%	48	123	64%
Allied Health	108	22	86	80%	19	67	80%	3	19	20%	4	85	12	4	2	1	2	17	18%	20	69	82%
Dentistry	56	26	30	54%	19	21	71%	7	9	29%	0	38	12	6	0	0	0	0	0%	26	30	100%
Medicine -MD	0	0	0	-	0	0	-	0	0	-	0	0	0	0	0	0	0	0	-	0	0	-
Medicine -PA	72	18	54	75%	11	42	74%	7	12	26%	0	44	13	13	2	0	18	54	100%	0	0	0%
Nursing	33	4	29	88%	4	28	97%	0	1	3%	0	0	10	13	6	4	2	5	21%	2	24	79%
Pharmacy	0	0	0	-	0	0	-	0	0	-	0	0	0	0	0	0	0	0	-	0	0	-
Public Health	0	0	0	-	0	0	-	0	0	-	0	0	0	0	0	0	0	0	-	0	0	-
GRADUATE COLLEGE (MS, PhD)	5	3	2	40%	1	1	40%	2	1	60%	0	0	5	0	0	0	0	0	0%	3	2	100%
Allied Health	0	0	0	-	0	0	-	0	0	-	0	0	0	0	0	0	0	0	-	0	0	-
Dentistry	5	3	2	40%	1	1	40%	2	1	60%	0	0	5	0	0	0	0	0	0%	3	2	100%
Graduate -CTS	0	0	0	-	0	0	-	0	0	-	0	0	0	0	0	0	0	0	-	0	0	-
Medicine	0	0	0	-	0	0	-	0	0	-	0	0	0	0	0	0	0	0	-	0	0	-
Nursing	0	0	0	-	0	0	-	0	0	-	0	0	0	0	0	0	0	0	-	0	0	-
Pharmacy	0	0	0	-	0	0	-	0	0	-	0	0	0	0	0	0	0	0	-	0	0	-
Public Health	0	0	0	-	0	0	-	0	0	-	0	0	0	0	0	0	0	0	-	0	0	-
TOTAL OUHSC	403	96	307	76%	76	257	83%	20	50	17%	10	239	78	52	12	8	45	179	56%	51	128	44%
Allied Health	160	30	130	81%	26	108	84%	4	22	16%	10	118	15	10	2	1	10	60	44%	20	70	56%
Dentistry	61	29	32	52%	20	22	69%	9	10	31%	0	38	17	6	0	0	0	0	0%	29	32	100%
Graduate -CTS	0	0	0	-	0	0	-	0	0	-	0	0	0	0	0	0	0	0	-	0	0	-
Medicine	72	18	54	75%	11	42	74%	7	12	26%	0	44	13	13	2	0	18	54	100%	0	0	0%
Nursing	108	19	89	82%	19	85	96%	0	4	4%	0	38	32	23	8	7	17	65	76%	2	24	24%
Pharmacy	0	0	0	-	0	0	-	0	0	-	0	0	0	0	0	0	0	0	-	0	0	-
Public Health	0	0	0	-	0	0	-	0	0	-	0	0	0	0	0	0	0	0	-	0	0	-
Norman Inter-Campus	0	0	0	-	0	0	-	0	0	-	0	0	0	0	0	0	0	0	-	0	0	-
Non-Degree	2	0	2	100%	0	0	0%	0	2	100%	0	1	1	0	0	0	0	0	0%	0	2	100%

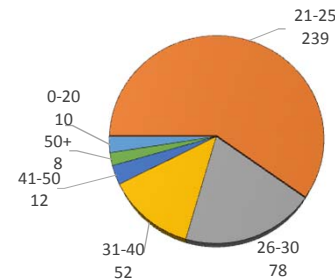
A&E BY GENDER



RESIDENCY STATUS



AGE DISTRIBUTION



ENROLLMENT STATUS

