

APPLICANT BY LEVEL REPORT

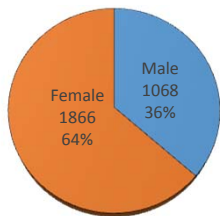
Fall 2016

Gender, Residency, Age & Full/Part Time Totals

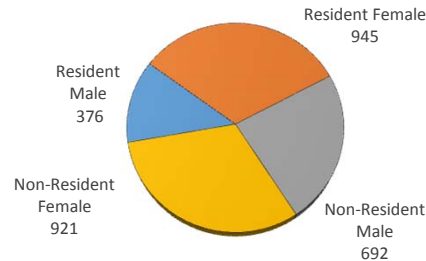
University of Oklahoma Health Sciences Center

LEVEL/COLLEGE	GENDER				RESIDENCY STATUS						AGE DISTRIBUTION						ENROLLMENT STATUS					
	TOT	Male	Female	%F	RESIDENT			NON-RESIDENT			0-20	21-25	26-30	31-40	41-50	>50+ Unkn	FULL TIME			PART TIME		
					Male	Female	%	Male	Female	%							Male	Female	%F	Male	Female	%F
UNDERGRADUATE	720	65	655	91%	55	513	79%	10	142	21%	165	335	101	83	25	11	21	286	43%	11	49	8%
Allied Health	56	6	50	89%	5	33	68%	1	17	32%	31	16	4	3	2	0	1	38	70%	3	7	18%
Dentistry	122	2	120	98%	2	111	93%	0	9	7%	17	81	18	6	0	0	0	45	37%	0	5	4%
Nursing	542	57	485	89%	48	369	77%	9	116	23%	117	238	79	74	23	11	20	203	41%	8	37	8%
HEALTH PROFESSIONAL	1952	886	1066	55%	284	390	35%	602	676	65%	19	1500	284	118	23	8	140	170	16%	35	106	7%
Allied Health	177	7	170	96%	5	76	46%	2	94	54%	0	154	11	7	2	3	1	30	18%	0	38	21%
Dentistry	0	0	0	-	0	0	-	0	0	-	0	0	0	0	0	0	0	0	-	0	0	-
Medicine -MD	1416	746	670	47%	205	185	28%	541	485	72%	12	1125	197	70	11	1	90	71	11%	16	13	2%
Medicine -PA	0	0	0	-	0	0	-	0	0	-	0	0	0	0	0	0	0	0	-	0	0	-
Nursing	28	2	26	93%	2	26	100%	0	0	0%	0	6	5	8	5	4	0	5	18%	2	16	64%
Pharmacy	206	89	117	57%	51	62	55%	38	55	45%	7	138	34	25	2	0	40	45	41%	6	6	6%
Public Health	125	42	83	66%	21	41	50%	21	42	50%	0	77	37	8	3	0	9	19	22%	11	33	35%
GRADUATE COLLEGE (MS, PhD)	253	112	141	56%	33	40	29%	79	101	71%	2	120	75	48	8	0	26	23	19%	14	15	11%
Allied Health	26	7	19	73%	4	6	38%	3	13	62%	0	10	13	3	0	0	3	3	23%	0	4	15%
Dentistry	0	0	0	-	0	0	-	0	0	-	0	0	0	0	0	0	0	0	-	0	0	-
Graduate -CTS	7	4	3	43%	3	3	86%	1	0	14%	0	0	1	5	1	0	4	2	86%	0	1	14%
Medicine	148	66	82	55%	17	21	26%	49	61	74%	2	88	38	17	3	0	12	12	16%	5	2	5%
Nursing	4	0	4	100%	0	3	75%	0	1	25%	0	0	2	0	2	0	0	3	75%	0	1	25%
Pharmacy	15	8	7	47%	1	2	20%	7	5	80%	0	4	6	5	0	0	2	2	27%	0	0	0%
Public Health	53	27	26	49%	8	5	25%	19	21	75%	0	18	15	18	2	0	5	1	11%	9	7	30%
TOTAL OUHSC	2934	1068	1866	64%	376	945	45%	692	921	55%	184	1957	460	252	59	20	187	479	23%	65	173	8%
Allied Health	259	20	239	92%	14	115	50%	6	124	50%	31	180	28	13	4	3	5	71	29%	3	49	20%
Dentistry	122	2	120	98%	2	111	93%	0	9	7%	17	81	18	6	0	0	0	45	37%	0	5	4%
Graduate -CTS	7	4	3	43%	3	3	86%	1	0	14%	0	0	1	5	1	0	4	2	86%	0	1	14%
Medicine	1564	812	752	48%	222	206	27%	590	546	73%	12	1213	235	87	14	1	102	83	12%	21	15	2%
Nursing	574	59	515	90%	50	398	78%	9	117	22%	117	244	86	82	30	15	20	211	40%	10	54	11%
Pharmacy	221	97	124	56%	52	64	52%	45	60	48%	7	142	40	30	2	0	42	47	40%	6	6	5%
Public Health	178	69	109	61%	29	46	42%	40	63	58%	0	95	52	26	5	0	14	20	19%	20	40	34%
Norman Inter-Campus	0	0	0	-	0	0	-	0	0	-	0	0	0	0	0	0	0	0	-	0	0	-
Non-Degree	9	5	4	44%	4	2	67%	1	2	33%	0	2	0	3	3	1	0	0	0%	5	3	89%

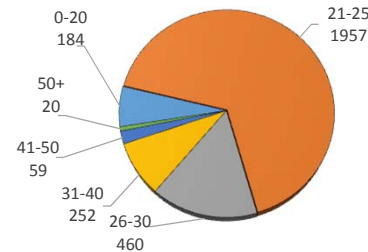
APPLICANT BY GENDER



RESIDENCY STATUS



AGE DISTRIBUTION



ENROLLMENT STATUS

