

ADMITTED BY LEVEL REPORT

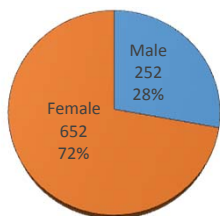
Fall 2016

Gender, Residency, Age & Full/Part Time Totals

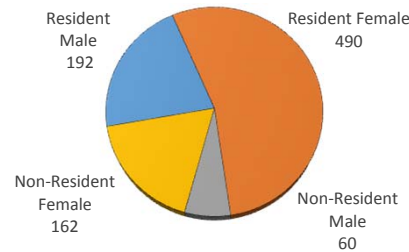
University of Oklahoma Health Sciences Center

LEVEL/COLLEGE	GENDER				RESIDENCY STATUS						AGE DISTRIBUTION						ENROLLMENT STATUS					
	TOT	Male	Female	%F	RESIDENT			NON-RESIDENT			0-20	21-25	26-30	31-40	41-50	>50+ Unkn	FULL TIME			PART TIME		
					Male	Female	%	Male	Female	%							Male	Female	%F	Male	Female	%F
UNDERGRADUATE	367	32	335	91%	29	269	81%	3	66	19%	109	151	45	42	14	6	21	286	84%	11	49	16%
Allied Health	49	4	45	92%	4	32	73%	0	13	27%	28	14	3	3	1	0	1	38	80%	3	7	20%
Dentistry	50	0	50	100%	0	49	98%	0	1	2%	10	31	6	3	0	0	0	45	90%	0	5	10%
Nursing	268	28	240	90%	25	188	79%	3	52	21%	71	106	36	36	13	6	20	203	83%	8	37	17%
HEALTH PROFESSIONAL	451	175	276	61%	144	197	76%	31	79	24%	5	349	44	39	10	4	140	170	69%	35	106	31%
Allied Health	69	1	68	99%	1	37	55%	0	31	45%	0	61	2	3	2	1	1	30	45%	0	38	55%
Dentistry	0	0	0	-	0	0	-	0	0	-	0	0	0	0	0	0	0	0	-	0	0	-
Medicine -MD	190	106	84	44%	91	71	85%	15	13	15%	1	164	15	10	0	0	90	71	85%	16	13	15%
Medicine -PA	0	0	0	-	0	0	-	0	0	-	0	0	0	0	0	0	0	0	-	0	0	-
Nursing	23	2	21	91%	2	21	100%	0	0	0%	0	4	3	8	5	3	0	5	22%	2	16	78%
Pharmacy	97	46	51	53%	40	41	84%	6	10	16%	4	72	7	13	1	0	40	45	88%	6	6	12%
Public Health	72	20	52	72%	10	27	51%	10	25	49%	0	48	17	5	2	0	9	19	39%	11	33	61%
GRADUATE COLLEGE (MS, PhD)	78	40	38	49%	15	23	49%	25	15	51%	0	32	24	19	3	0	26	23	63%	14	15	37%
Allied Health	10	3	7	70%	2	5	70%	1	2	30%	0	4	5	1	0	0	3	3	60%	0	4	40%
Dentistry	0	0	0	-	0	0	-	0	0	-	0	0	0	0	0	0	0	0	-	0	0	-
Graduate -CTS	7	4	3	43%	3	3	86%	1	0	14%	0	0	1	5	1	0	4	2	86%	0	1	14%
Medicine	31	17	14	45%	5	7	39%	12	7	61%	0	19	7	5	0	0	12	12	77%	5	2	23%
Nursing	4	0	4	100%	0	3	75%	0	1	25%	0	0	2	0	2	0	0	3	75%	0	1	25%
Pharmacy	4	2	2	50%	1	1	50%	1	1	50%	0	1	2	1	0	0	2	2	100%	0	0	0%
Public Health	22	14	8	36%	4	4	36%	10	4	64%	0	8	7	7	0	0	5	1	27%	9	7	73%
TOTAL OUHSC	904	252	652	72%	192	490	75%	60	162	25%	114	533	113	103	30	11	187	479	74%	65	173	26%
Allied Health	128	8	120	94%	7	74	63%	1	46	37%	28	79	10	7	3	1	5	71	59%	3	49	41%
Dentistry	50	0	50	100%	0	49	98%	0	1	2%	10	31	6	3	0	0	0	45	90%	0	5	10%
Graduate -CTS	7	4	3	43%	3	3	86%	1	0	14%	0	0	1	5	1	0	4	2	86%	0	1	14%
Medicine	221	123	98	44%	96	78	79%	27	20	21%	1	183	22	15	0	0	102	83	84%	21	15	16%
Nursing	295	30	265	90%	27	212	81%	3	53	19%	71	110	41	44	20	9	20	211	78%	10	54	22%
Pharmacy	101	48	53	52%	41	42	82%	7	11	18%	4	73	9	14	1	0	42	47	88%	6	6	12%
Public Health	94	34	60	64%	14	31	48%	20	29	52%	0	56	24	12	2	0	14	20	36%	20	40	64%
Norman Inter-Campus	0	0	0	-	0	0	-	0	0	-	0	0	0	0	0	0	0	0	-	0	0	-
Non-Degree	8	5	3	38%	4	1	63%	1	2	38%	0	1	0	3	3	1	0	0	0%	5	3	100%

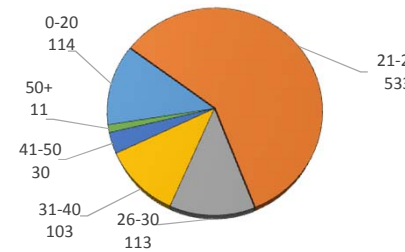
ENROLLMENT BY GENDER



RESIDENCY STATUS



AGE DISTRIBUTION



ENROLLMENT STATUS

