

# ADMITTED BY LEVEL REPORT

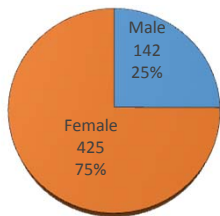
Gender, Residency, Age & Full/Part Time Totals

Summer 2015

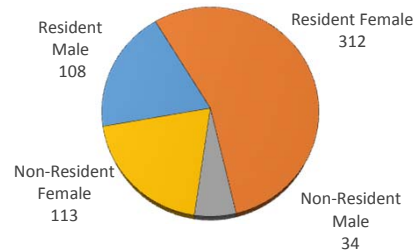
University of Oklahoma Health Sciences Center

LEVEL/COLLEGE	GENDER				RESIDENCY STATUS						AGE DISTRIBUTION						ENROLLMENT STATUS					
	TOT	Male	Female	%F	RESIDENT			NON-RESIDENT			0-20	21-25	26-30	31-40	41-50	>50+ Unkn	FULL TIME			PART TIME		
					Male	Female	%	Male	Female	%							Male	Female	%F	Male	Female	%F
<b>UNDERGRADUATE</b>	<b>178</b>	<b>30</b>	<b>148</b>	<b>83%</b>	<b>28</b>	<b>121</b>	<b>84%</b>	<b>2</b>	<b>27</b>	<b>16%</b>	<b>19</b>	<b>92</b>	<b>32</b>	<b>24</b>	<b>9</b>	<b>2</b>	<b>23</b>	<b>123</b>	<b>82%</b>	<b>7</b>	<b>25</b>	<b>18%</b>
Allied Health	80	17	63	79%	17	55	90%	0	8	10%	19	41	11	6	3	0	13	56	86%	4	7	14%
Dentistry	0	0	0	-	0	0	-	0	0	-	0	0	0	0	0	0	0	0	-	0	0	-
Nursing	98	13	85	87%	11	66	79%	2	19	21%	0	51	21	18	6	2	10	67	79%	3	18	21%
<b>HEALTH PROFESSIONAL</b>	<b>362</b>	<b>101</b>	<b>261</b>	<b>72%</b>	<b>76</b>	<b>184</b>	<b>72%</b>	<b>25</b>	<b>77</b>	<b>28%</b>	<b>5</b>	<b>222</b>	<b>65</b>	<b>44</b>	<b>18</b>	<b>8</b>	<b>17</b>	<b>87</b>	<b>29%</b>	<b>84</b>	<b>174</b>	<b>71%</b>
Allied Health	124	25	99	80%	21	59	65%	4	40	35%	3	100	15	5	1	0	0	11	9%	25	88	91%
Dentistry	83	48	35	42%	29	18	57%	19	17	43%	0	60	14	8	1	0	0	7	8%	48	28	92%
Medicine -MD	0	0	0	-	0	0	-	0	0	-	0	0	0	0	0	0	0	0	-	0	0	-
Medicine -PA	81	15	66	81%	13	53	81%	2	13	19%	2	52	17	7	2	1	13	61	91%	2	5	9%
Nursing	74	13	61	82%	13	54	91%	0	7	9%	0	10	19	24	14	7	4	8	16%	9	53	84%
Pharmacy	0	0	0	-	0	0	-	0	0	-	0	0	0	0	0	0	0	0	-	0	0	-
Public Health	0	0	0	-	0	0	-	0	0	-	0	0	0	0	0	0	0	0	-	0	0	-
<b>GRADUATE COLLEGE (MS, PhD)</b>	<b>10</b>	<b>5</b>	<b>5</b>	<b>50%</b>	<b>1</b>	<b>2</b>	<b>30%</b>	<b>4</b>	<b>3</b>	<b>70%</b>	<b>0</b>	<b>3</b>	<b>5</b>	<b>1</b>	<b>0</b>	<b>1</b>	<b>0</b>	<b>0</b>	<b>0%</b>	<b>5</b>	<b>5</b>	<b>100%</b>
Allied Health	2	0	2	100%	0	2	100%	0	0	0%	0	2	0	0	0	0	0	0	0%	0	2	100%
Dentistry	7	4	3	43%	1	0	14%	3	3	86%	0	1	4	1	0	1	0	0	0%	4	3	100%
Graduate -CTS	0	0	0	-	0	0	-	0	0	-	0	0	0	0	0	0	0	0	-	0	0	-
Medicine	1	1	0	0%	0	0	0%	1	0	100%	0	0	1	0	0	0	0	0	0%	1	0	100%
Nursing	0	0	0	-	0	0	-	0	0	-	0	0	0	0	0	0	0	0	-	0	0	-
Pharmacy	0	0	0	-	0	0	-	0	0	-	0	0	0	0	0	0	0	0	-	0	0	-
Public Health	0	0	0	-	0	0	-	0	0	-	0	0	0	0	0	0	0	0	-	0	0	-
<b>TOTAL OUHSC</b>	<b>567</b>	<b>142</b>	<b>425</b>	<b>75%</b>	<b>108</b>	<b>312</b>	<b>74%</b>	<b>34</b>	<b>113</b>	<b>26%</b>	<b>28</b>	<b>323</b>	<b>105</b>	<b>70</b>	<b>27</b>	<b>11</b>	<b>40</b>	<b>210</b>	<b>44%</b>	<b>102</b>	<b>215</b>	<b>56%</b>
Allied Health	206	42	164	80%	38	116	75%	4	48	25%	19	143	26	11	4	0	13	67	39%	29	97	61%
Dentistry	90	52	38	42%	30	18	53%	22	20	47%	0	61	18	9	1	1	0	7	8%	52	31	92%
Graduate -CTS	0	0	0	-	0	0	-	0	0	-	0	0	0	0	0	0	0	0	-	0	0	-
Medicine	82	16	66	80%	13	53	80%	3	13	20%	2	52	18	7	2	1	13	61	90%	3	5	10%
Nursing	172	26	146	85%	24	120	84%	2	26	16%	0	61	40	42	20	9	14	75	52%	12	71	48%
Pharmacy	0	0	0	-	0	0	-	0	0	-	0	0	0	0	0	0	0	0	-	0	0	-
Public Health	0	0	0	-	0	0	-	0	0	-	0	0	0	0	0	0	0	0	-	0	0	-
Norman Inter-Campus	0	0	0	-	0	0	-	0	0	-	0	0	0	0	0	0	0	0	-	0	0	-
Non-Degree	17	6	11	65%	3	5	47%	3	6	53%	7	6	3	1	0	0	0	0	0%	6	11	100%

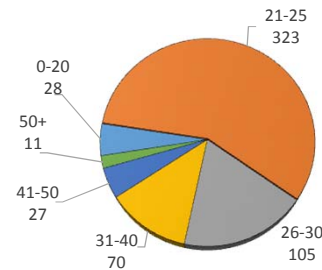
ADMITTED BY GENDER



RESIDENCY STATUS



AGE DISTRIBUTION



ENROLLMENT STATUS

