

ADMITTED & ENROLLED BY LEVEL REPORT

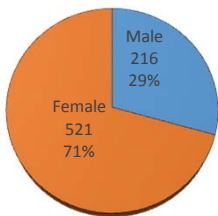
Fall 2015

Gender, Residency, Age & Full/Part Time Totals

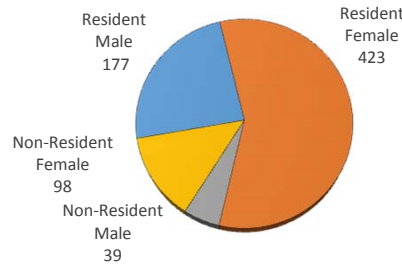
University of Oklahoma Health Sciences Center

LEVEL/COLLEGE	GENDER				RESIDENCY STATUS						AGE DISTRIBUTION						ENROLLMENT STATUS					
	TOT	Male	Female	%F	RESIDENT			NON-RESIDENT			0-20	21-25	26-30	31-40	41-50	>50+ Unkn	FULL TIME			PART TIME		
					Male	Female	%	Male	Female	%							Male	Female	%F	Male	Female	%F
UNDERGRADUATE	328	34	294	90%	32	246	85%	2	48	15%	94	149	39	32	14	0	32	286	97%	2	8	3%
Allied Health	54	5	49	91%	4	31	65%	1	18	35%	32	17	3	2	0	0	5	45	93%	0	4	7%
Dentistry	46	2	44	96%	2	41	93%	0	3	7%	7	33	3	2	1	0	2	44	100%	0	0	0%
Nursing	228	27	201	88%	26	174	88%	1	27	12%	55	99	33	28	13	0	25	197	97%	2	4	3%
HEALTH PROFESSIONAL	346	157	189	55%	132	157	84%	25	32	16%	8	267	48	17	3	3	151	176	95%	6	13	5%
Allied Health	40	2	38	95%	2	24	65%	0	14	35%	0	34	5	1	0	0	2	38	100%	0	0	0%
Dentistry	0	0	0	-	0	0	-	0	0	-	0	0	0	0	0	0	0	0	-	0	0	-
Medicine -MD	160	94	66	41%	85	60	91%	9	6	9%	2	136	19	3	0	0	94	66	100%	0	0	0%
Medicine -PA	0	0	0	-	0	0	-	0	0	-	0	0	0	0	0	0	0	0	-	0	0	-
Nursing	17	3	14	82%	3	13	94%	0	1	6%	0	2	5	5	2	3	0	6	35%	3	8	65%
Pharmacy	94	48	46	49%	33	37	74%	15	9	26%	5	70	13	6	0	0	48	46	100%	0	0	0%
Public Health	35	10	25	71%	9	23	91%	1	2	9%	1	25	6	2	1	0	7	20	77%	3	5	23%
GRADUATE COLLEGE (MS, PhD)	59	23	36	61%	12	18	51%	11	18	49%	1	26	15	13	2	2	16	30	78%	7	6	22%
Allied Health	11	2	9	82%	2	5	64%	0	4	36%	0	5	3	2	1	0	1	9	91%	1	0	9%
Dentistry	0	0	0	-	0	0	-	0	0	-	0	0	0	0	0	0	0	0	-	0	0	-
Graduate -CTS	4	3	1	25%	2	1	75%	1	0	25%	0	0	1	3	0	0	2	1	75%	1	0	25%
Medicine	32	13	19	59%	5	7	38%	8	12	63%	0	18	8	6	0	0	9	15	75%	4	4	25%
Nursing	4	0	4	100%	0	4	100%	0	0	0%	0	0	0	1	1	2	0	3	75%	0	1	25%
Pharmacy	2	0	2	100%	0	0	0%	0	2	100%	0	1	1	0	0	0	0	2	100%	0	0	0%
Public Health	6	5	1	17%	3	1	67%	2	0	33%	1	2	2	1	0	0	4	0	67%	1	1	33%
TOTAL OUHSC	737	216	521	71%	177	423	81%	39	98	19%	103	442	103	64	19	6	199	492	94%	17	29	6%
Allied Health	105	9	96	91%	8	60	65%	1	36	35%	32	56	11	5	1	0	8	92	95%	1	4	5%
Dentistry	46	2	44	96%	2	41	93%	0	3	7%	7	33	3	2	1	0	2	44	100%	0	0	0%
Graduate -CTS	4	3	1	25%	2	1	75%	1	0	25%	0	0	1	3	0	0	2	1	75%	1	0	25%
Medicine	192	107	85	44%	90	67	82%	17	18	18%	2	154	27	9	0	0	103	81	96%	4	4	4%
Nursing	249	30	219	88%	29	191	88%	1	28	12%	55	101	38	34	16	5	25	206	93%	5	13	7%
Pharmacy	96	48	48	50%	33	37	73%	15	11	27%	5	71	14	6	0	0	48	48	100%	0	0	0%
Public Health	41	15	26	63%	12	24	88%	3	2	12%	2	27	8	3	1	0	11	20	76%	4	6	24%
Norman Inter-Campus	0	0	0	-	0	0	-	0	0	-	0	0	0	0	0	0	0	0	-	0	0	-
Non-Degree	4	2	2	50%	1	2	75%	1	0	25%	0	0	1	2	0	1	0	0	0%	2	2	100%

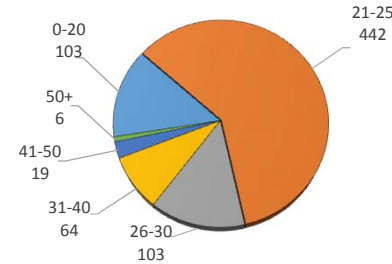
A&E BY GENDER



RESIDENCY STATUS



AGE DISTRIBUTION



ENROLLMENT STATUS

