

PAT TILLMAN FOUNDATION

Through a premier fellowship program, our mission is to identify and empower remarkable military veterans and spouses who are united in service through action. The program supports Tillman Scholars with academic scholarships, a national network, and professional development opportunities, so they are empowered to make an impact in the world.

SCHOLARSHIP

2018 Tillman Scholars can expect to receive an average of \$10,000 per academic year to be used for tuition, books, and living expenses.

NETWORK

Tillman Scholars will get plugged into a national network of dedicated people and resources, including networking with Regional Foundation Captains and opportunities to attend events like the Inc. 5000 Conference and South by Southwest.

PROFESSIONAL DEVELOPMENT

All 2018 Tillman Scholars can apply for a mini-grant up to \$1,000 to support a professional development opportunity such as a conference, workshop, training, and certification.

Tillman Scholars are public and private sector leaders committed to service beyond self.
Learn more about their impact at PatTillmanFoundation.org


2012  **TILLMAN SCHOLAR**

U.S. ARMY
CITY COLLEGE OF NEW YORK
B.A., POLITICAL SCIENCE

SAMUEL INNOCENT



Sam Innocent joined the military in 2004 as a path to pursue higher education. Now, as a veteran specialist for a workforce development company, Sam collaborates with government agencies to develop workforce programs. He is a passionate advocate for quality education, jobs and affordable healthcare in low-income neighborhoods like his own in Brownsville, Brooklyn. Appointed as the Vice Chair of the Veterans' Advisory Board for the Commissioner of Veterans' Affairs, he has also played a role in several legislative successes for veterans in New York City.

2016  **TILLMAN SCHOLAR**

U.S. ARMY
NORTH CAROLINA STATE UNIVERSITY
DVM, VETERINARY MEDICINE

AMIE PFLAUM



When the events of 9/11 cut deeply into her tightknit suburb outside Washington D.C., Amie Pflaum felt compelled to join in the fight against terrorism. After four years in ROTC, Amie joined the Army Aviation Corps as a Blackhawk helicopter pilot. Since then, she's spent a decade serving across the globe and is now pursuing a Doctor of Veterinary Medicine degree at North Carolina State University. She hopes to use her understanding of species epidemiology and the ecology of zoonotic and foodborne diseases to improve animal and human health in the U.S. and abroad.

UNIVERSITY PARTNERS

While Tillman Scholar candidates may apply from any accredited institution of higher education, we are proud to partner with 15 colleges and universities to support Tillman Scholars enrolled at the following institutions. If you are a student at one of our University Partners and have a question specific to your institution, please contact the POC listed at PatTillmanFoundation.org/apply



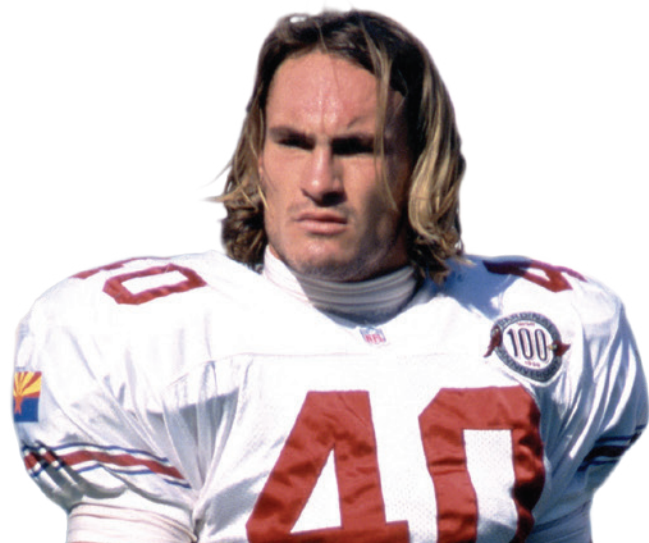


TILLMAN
SCHOLAR

TILLMAN SCHOLAR CLASS OF 2018
APPLICATION PERIOD: FEB. 1 - MARCH 1, 2018

CARRYING ON PAT'S LEGACY

In 2002, Pat Tillman proudly put his NFL career with the Arizona Cardinals on hold to serve his country. Family and friends established the Pat Tillman Foundation following Pat's death in April 2004 while serving with the 75th Ranger Regiment in Afghanistan. The qualities we look for in our Tillman Scholars are the same qualities that Pat displayed throughout his life.



APPLY TO BE A 2018 TILLMAN SCHOLAR

Tillman Scholars are chosen based on merit. Strong applicants demonstrate clear academic goals, extraordinary leadership potential, and a deep desire to create positive change. They believe their best years of service to our country are still ahead of them, and are committed to strengthening communities at home and around the world.

WHO IS ELIGIBLE TO APPLY?

1. Veteran and active-duty military service members
2. Veterans with pre- and/or post-9/11 service from all branches of the U.S. Military, including the National Guard and Reserve
3. Current spouses of veterans or active-duty service members, including surviving spouses
4. Military veterans or spouses pursuing a degree as a full-time* student:
 - Undergraduate Bachelor's degree
 - Graduate or professional degree
 - At a public or private, U.S.-based accredited institution of higher education

*Full-time as determined by your institution and program of study

WHAT IS REQUIRED FOR AN APPLICATION?

1. Applicants will be required to submit the following:
 - Resume
 - Two essay questions
 - Financial worksheet
 - Character recommendation from a third party
 - 250 word bio
2. If an applicant progresses, we will request the following additional information at junctures in the selection process:
 - Student Aid Report from FAFSA
 - Two photos from military service or with your spouse
 - Institutional financial aid award letter
 - Completion of a background check

ON WHAT BASIS ARE SCHOLARS SELECTED?



SERVICE

Dedication to service beyond self in and out of uniform.



SCHOLARSHIP

Actively pursuing education; listening and learning by doing.



HUMBLE LEADERSHIP

Bringing people together to achieve uncommon results.



IMPACT

Advancing an idea or cause to make the world a better place.

FOR MORE ON ELIGIBILITY, BENEFITS AND EXPECTATIONS, VISIT

pattillmanfoundation.org/apply